

*Production of small diameter and  
thickness stainless steel tubes*



**CSM TUBE**



## Summary

ABOUT	P. 02
PRODUCTS	P. 04
ALLOYS	P. 08
APPLICATIONS	P. 09
QUALITY	P. 10
TRANSFORMED TUBES	P. 12
RESPONSIBILITIES	P. 14
CERTIFICATIONS	P. 16
THE GROUP	P. 18
CONTACTS	P. 20

Part of the **CSM GROUP**, **CSM TUBE** has its production sites in Italy, the United States, Brazil and a sales office in Germany.

CSM TUBE produces **welded stainless steel tubes, with and without heat treatment, in a controlled atmosphere**, either in straightened and cut-to-length bars in lengths up to 20 meters, or in coils up to 2000 meters in length.

The tubes produced have diameters ranging from 5.00 mm to 32.00 mm and thicknesses ranging from 0.30 mm to 2.00 mm. Meeting **the highest international quality standards**, CSM TUBE produces OVER 70 million meters of tube per year.

A world leader in the **PRODUCTION** of small diameter and thickness **STAINLESS STEEL TUBES.**



Key strengths:



**Highly specialized personnel**



**Cutting-edge technology**



**Certified quality of stainless steel tubes**

CSM TUBE in numbers:

**+20.000** m<sup>2</sup>

of manufacturing grounds

**+70** mln/m

in production capacity

**+70**

countries we export to

# Set **NEW STANDARDS** in the **PRODUCTION OF** **STAINLESS STEEL TUBES.**

CSM TUBE, thanks to ongoing competitiveness and technological innovation, has diversified its product range and increased its production capacity, becoming a market leader.

## This is what CSM TUBE offers:

- **Dimensional tolerances**  
in conformity with EN 10217-7 and ISO 1127, D4, T3 standards.
- **Delivery conditions**  
W0, W2R, W2Rb.
- **Mechanical properties**  
in accordance with EN10217-7 and ASTM A269 - A249.
- **Roll tube wrapped in coils**  
of lengths up to 2000m and tested at pressures up to 70 bar.

*\*Special tolerances and specific tests upon request*



**Marking**  
All tubes are marked in accordance with current regulations.

## Product types:



**TUBES IN BARS**



**TUBES IN COILS**

# PRODUCT RANGE

Diameter		Thickness (mm)										Diameter		Thickness (mm)											
mm	inch	0,30	0,40	0,50	0,60	0,70	0,80	0,90	1,00	1,20	1,50	mm	inch	0,30	0,40	0,50	0,60	0,70	0,80	0,90	1,00	1,20	1,50	1,65	2,00
5,00		●	●	●	●							15,00		●	●	●	●	●	●	●	●	●			
5,20		●	●	●	●							15,50		●	●	●	●	●	●	●	●	●			
5,35		●	●	●	●	●						15,70		●	●	●	●	●	●	●	●	●			
6,00		●	●	●	●	●	●	●	●			15,88	5/8"	●	●	●	●	●	●	●	●	●	●	●	
6,35	1/4"	●	●	●	●	●	●	●	●			16,00		●	●	●	●	●	●	●	●	●	●	●	
6,60		●	●	●	●	●	●	●	●			17,00			●	●	●	●	●	●	●	●	●	●	
7,00		●	●	●	●	●	●	●	●			17,40			●	●	●	●	●	●	●	●	●	●	
7,20		●	●	●	●	●	●	●	●			18,00			●	●	●	●	●	●	●	●	●	●	
7,50		●	●	●	●	●	●	●	●			19,00			●	●	●	●	●	●	●	●	●	●	
8,00		●	●	●	●	●	●	●	●			19,05	3/4"		●	●	●	●	●	●	●	●	●	●	
8,50		●	●	●	●	●	●	●	●			19,30			●	●	●	●	●	●	●	●	●	●	
9,50	3/8"	●	●	●	●	●	●	●	●			19,50			●	●	●	●	●	●	●	●	●	●	
9,53		●	●	●	●	●	●	●	●			19,70			●	●	●	●	●	●	●	●	●	●	
9,90		●	●	●	●	●	●	●	●			20,00			●	●	●	●	●	●	●	●	●	●	●
10,00		●	●	●	●	●	●	●	●	●	●	21,00				●	●	●	●	●	●	●	●	●	●
10,50		●	●	●	●	●	●	●	●	●	●	21,30				●	●	●	●	●	●	●	●	●	●
10,80		●	●	●	●	●	●	●	●	●	●	21,60				●	●	●	●	●	●	●	●	●	●
11,00		●	●	●	●	●	●	●	●	●	●	22,00				●	●	●	●	●	●	●	●	●	●
11,20		●	●	●	●	●	●	●	●	●	●	22,22	7/8"			●	●	●	●	●	●	●	●	●	●
11,50		●	●	●	●	●	●	●	●	●	●	23,00				●	●	●	●	●	●	●	●	●	●
11,80		●	●	●	●	●	●	●	●	●	●	24,00				●	●	●	●	●	●	●	●	●	●
12,00		●	●	●	●	●	●	●	●	●	●	25,00	1"			●	●	●	●	●	●	●	●	●	●
12,70	1/2"	●	●	●	●	●	●	●	●	●	●	25,40				●	●	●	●	●	●	●	●	●	●
13,00		●	●	●	●	●	●	●	●	●	●	26,00				●	●	●	●	●	●	●	●	●	●
13,20		●	●	●	●	●	●	●	●	●	●	26,90				●	●	●	●	●	●	●	●	●	●
13,50		●	●	●	●	●	●	●	●	●	●	27,00				●	●	●	●	●	●	●	●	●	●
13,80		●	●	●	●	●	●	●	●	●	●	28,00				●	●	●	●	●	●	●	●	●	●
14,00		●	●	●	●	●	●	●	●	●	●	30,00				●	●	●	●	●	●	●	●	●	●
14,30		●	●	●	●	●	●	●	●	●	●	31,75	1-1/4"				●	●	●	●	●	●	●	●	●
14,50		●	●	●	●	●	●	●	●	●	●	32,00					●	●	●	●	●	●	●	●	●



We are able to provide HEAT TREATED tube, the treatment is made with an "in line" induction oven working at 1050°C, working in a protected atmosphere above the re-crystallization temperature.

## Available alloys

Alloys		Chemical composition										
EN	ASTM	C% max	Si%	Mn% max	P% max	S% max	N%	Cr%	Cu%	Mo%	Ni%	Others
<b>AUSTENITIC</b>												
1.4301	TP 304	0,070	<1,00	2,00	0,045	0,015		18-19,5			8-10,5	
1.4306		0,030	<1,00	2,00	0,045	0,015	<0,1	18-20			10-12	
1.4307	TP 304L	0,030	<1,00	2,00	0,045	0,015		18-19,5			8-10,5	
1.4541	TP 321	0,080	<1,00	2,00	0,045	0,015		17-19			9-12	Ti: 5*C%-0,70
1.4404	TP 316L	0,030	<1,00	2,00	0,045	0,015	<0,1	16,5-18		2-2,5	10-13	
1.4571		0,080	<1,00	2,00	0,045	0,015		16,5-18,5		2-2,5	10,5-13,5	Ti: 5*C%-0,70
1.4828	(TP 309)	0,200	1,5-2,5	2,00	0,045	0,015	<0,11	19-21			11-13	
1.4833	TP 309S	0,080	<1,00	2,00	0,045	0,015	<0,11	22-24			12-14	

\*(TP 309) Not normed in ASTM tables

Alloys		Chemical composition										
EN	ASTM	C% max	Si%	Mn% max	P% max	S% max	N%	Cr%	Cu%	Mo%	Ni%	Others
<b>FERRITIC</b>												
1.4512	TP 409	0,030	<1,00	1,00	0,040	0,015	<0,03	10,5-11,7				
1.4510	TP 439	0,050	<1,00	1,00	0,040	0,015		16-18				4*(C%+N%)+0,15<Ti<0,80
1.4509	(TP 441)	0,030	<1,00	1,00	0,040	0,015		17,5-18,5				"3*C%+0,3<Nb<1 0,10<Ti<0,69"
1.4521	TP 444	0,025	<1,00	1,00	0,040	0,015	<0,03	17-20		1,8-2,5		4*(C%+N%)+0,15<Ti<0,80

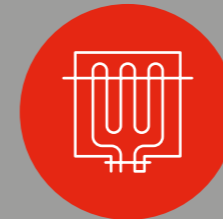
\*(TP 441) Not normed in ASTM tables

Alloys		Chemical composition										
EN	ASTM	C% max	Si%	Mn% max	P% max	S% max	N%	Cr%	Cu%	Mo%	Ni%	Others
<b>NICHEL ALLOYS</b>												
1.4876	800	0,100	1,00	1,50	0,045	0,015		19-23	0-0,75		30-35	"0,15<Al<0,60 0,15<Ti<0,60"
1.4847	840	0,080	1,00	1,00	0,030	0,015		18-22			18-22	Al<0,6; Ti<0,6
2.4858	825	0,050	0,50	1,00		0,030		19,5-23,5	1,5-3	2,5-3,5	38-46	0,6<Ti<1,2 ; Al<0,2
2.4816	600	0,150	0,50	1,00		0,015		14-17	<0,5		>72	
2.4851	601	0,03-0,1	0,5	1	0,02	0,015		21-25	<0,5		58-63	1<Al<1,7; Ti<0,5

# WIDE RANGE of applications for ENDLESS PARTNERSHIPS.

Those who rely on CSM TUBE are sure to find an answer to all their needs with the highest quality and technological standards.

Our products are used in many industries including:



Heating elements



Heat exchangers



Food and beverage



Tubes cut to size



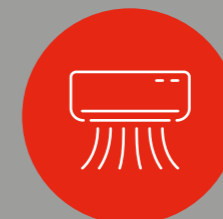
Heating appliances



Automotive



Solar collectors



Tubes for air conditioning



Energy

We believe that **INVESTING IN QUALITY IS** the **KEY TO FUTURE SUCCESS.**



Our Quality Control Center **continuously monitors and controls every phase of the stainless steel tube production process.** It consists of a **team of highly specialized technicians** who receive ongoing training and advanced testing

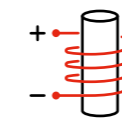
equipment that checks product compliance **24 hours a day, 7 days a week.** The goal is to provide customers **with a reliable product that meets their specific needs.**

**CSM TUBE's "Quality Policies" focus on the following topics:**

- Production excellence
- Effectiveness, efficiency and data analysis
- Employee growth
- Customer-focus approach
- Optimization of production processes

**Corporate integrity and quality: an unbreakable bond for excellence.**

**Non-destructive testing**



**Eddy Current Test**



**Penetrant liquid test**



**Chemical analysis**



**Roughness measurement**

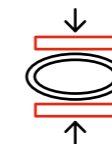


**Dimensional controls**

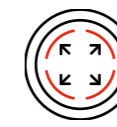


**Micrographic analysis**

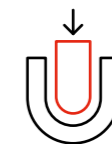
**Destructive test**



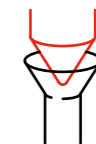
**Flattening test**



**Expansion test**

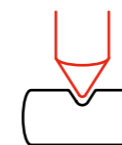


**Bending test**

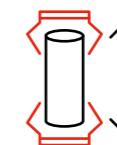


**Flaring test**

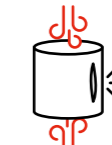
**Mechanical tests**



**Hardness test**



**Tensile test**



**Bursting test**



**Pressure test**

# “TRANSFORMING” TUBES for ALL YOUR PROJECTS.



## CSM TUBE and CSM TRANSFORMING: together to offer a complete service from tube production to processing.

The tubes produced by CSM TUBE can be **custom processed by CSM TRANSFORMING** and transformed into components to be assembled into the final product, such as heat exchangers, motors, coffee machines, boilers, solar collectors, etc.

**Customization and innovation, quality and reliability** are the keywords of this service that, starting from a specific request, allows for a **shorter supply chain and reduced operating costs.**

### CSM TRANSFORMING's specialties:

---

- Precision cutting
- Drilling
- Forming
- Bending
- Profiling
- Milling
- Curving
- Hammering
- Edge workings



CSM TUBE



CSM TRANSFORMING



# **SAFETY, ETHICS** *and* **ENVIRONMENTAL AWARENESS,** *our* **SUSTAINABLE BUSINESS** *model.*

At CSM TUBE we believe that being a market leader also means **being a fair and sustainable company**. For this reason, we have identified three pillars on the road to sustainability: safety, ethics and environmental awareness.

01

## **Social policies and local initiatives**

Inheriting the legacy passed down by founder Giorgio Trolese in support of sports and youth, we support numerous local sport initiatives and organizations dedicated to cancer and health.

02

## **Safety**

We protect people in the workplace with a man-forklift anti-collision system, with defibrillators located in designated places, and with significant investments in cybersecurity.

03

## **Environmental awareness**

This is evident in the numerous energy efficiency measures and carbon footprint reduction efforts, such as the new 600 kWp solar photovoltaic system (13% of electricity self-produced in 2024), the reuse of packaging (49%), the new high-efficiency cooling system with heat recovery for heating, and the promotion of Carpooling for employees. All of these initiatives are aimed at reducing CO2 emissions.

04

## **Ethics**

This is represented by our code of ethics, a guide to adopt transparent and correct behaviors towards colleagues, customers, suppliers, authorities and all the entities we come in contact with.

**With concrete and shared actions, we commit to generating a positive and lasting impact in the community.**

## **People First**

Every day, we are committed to **fostering strong and lasting relationships** within our companies through the creation of a collaborative, professionally stimulating, inclusive, and safe **work environment**.

We do this with **continuous training programs** and **career opportunities** in Italy and abroad to enhance and **develop the skills** of our staff, because every member of our team is an **integral part of the company's and the group's success**.



# QUALITY, HEALTH, SAFETY, and ENVIRONMENT: our certifications.



**Building a sustainable future  
together starting with the level of  
service we provide.**

From work safety to environmental management, each certification we have achieved is a demonstration of our **commitment to maintaining and exceeding the highest standards.**

- Occupational Health and Safety Management System standard ISO 45001:2018
- Environmental Management Systems ISO 14001:2015
- Quality Management System ISO 9001:2015
- Pressure Equipment Directive 2014/68/EU, Annex I, Section 4.3
- AD2000 Merkblatt W0 – W2



## The strength of a cohesive Group to create stainless bonds.

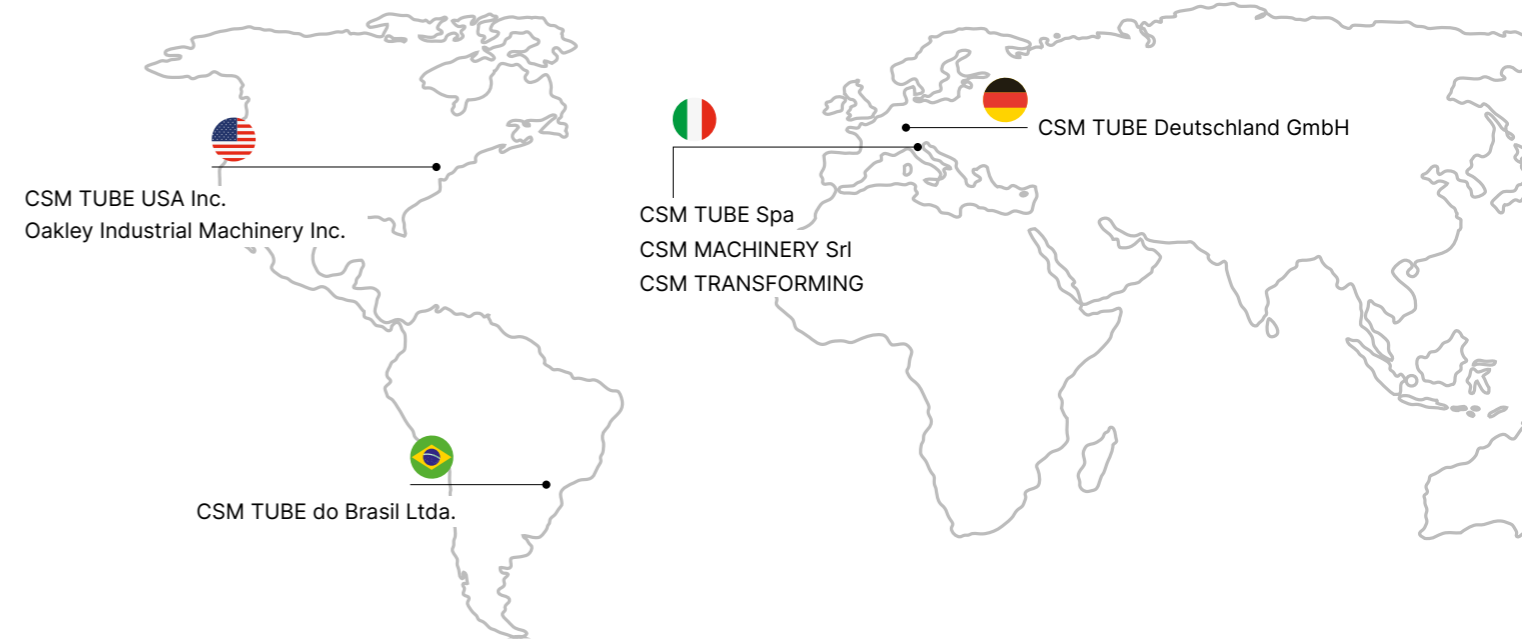
**CSM TUBE** is one of the 7 companies of **CSM GROUP**. The unbreakable bond between the company and the Group is characterized by the **synergy between technology and quality** to streamline the supply chain and reduce operating and production costs. CSM GROUP was founded **over 40 years ago** with the ambition to bring

innovation and excellence to the construction of machinery and the production of stainless steel tubes. **The seven companies that belong to the Group** allow to best serve each market segment with readiness and in short period of time.

**7 companies worldwide**

**40+ years of growth**

**200+ employees**



**CSM TUBE**

Production of small diameter and thickness stainless steel tubes.



**CSM TRANSFORMING**

Custom tube processing for tailor-made solutions.



**CSM MACHINERY**

Machinery for the production of heating elements and stainless steel tubes.



**OAKLEY**  
INDUSTRIAL MACHINERY

Manufacture of terminal pins and machinery for the production of heating elements.

**CSM TUBE spa**

Via del Lavoro 60,  
31013 Cimavilla di Codognè (TV) - Italy  
+39 0438471100  
[info@csmtube.com](mailto:info@csmtube.com)

**CSM TUBE DEUTSCHLAND GmbH**

Ampèrestrasse 1C,  
64625 Bensheim - Germany  
+49(0)6251/9446725  
[Info.de@csmtube.com](mailto:Info.de@csmtube.com)

**CSM TUBE USA Inc.**

1601 Lunt Avenue,  
60007 Elk Grove Village - Illinois - USA  
+1 8476406447  
[info@csmtube.com](mailto:info@csmtube.com)

**CSM TUBE do Brasil Ltda.**

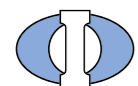
Rua Fortunato José Deltreggia 120,  
13347-441 Park Comercial Indaiatuba (Indaiatuba, SP) - Brasil  
+55 1931153900  
[info@csmtube.com](mailto:info@csmtube.com)



Via del Lavoro 60,  
31013 Cimavilla di Codognè (TV) - Italy

**CSM MACHINERY srl**

Via Cadore Mare 25,  
31013 Cimetta di Codognè (TV) - Italy  
+39 0438795326  
[info@csmmachinery.com](mailto:info@csmmachinery.com)

**OAKLEY**  
INDUSTRIAL MACHINERY**OAKLEY INDUSTRIAL MACHINERY Inc.**

1601 Lunt Avenue,  
60007 Elk Grove Village - Illinois - USA  
+1 8479660052  
[info@oim-inc.com](mailto:info@oim-inc.com)

